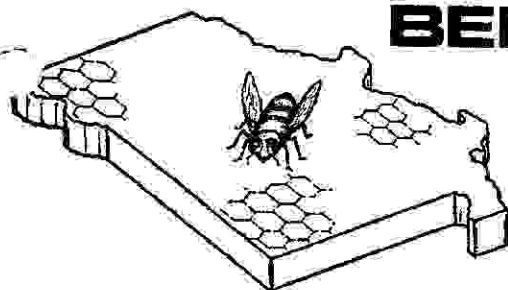


MISSOURI STATE BEEKEEPERS ASSOCIATION



PRESIDENT
CHARLES WILLS
630 S. NEWTON
SPRINGFIELD, MO. 65806
417-866-6002

SECRETARY
CHESTER CRAIN
1216 W. 38TH ST.
K. C. MO. 64111
816-561-3502

1ST VICE-PRES.
TRUMAN C. HARDIN
1829 W. WASHITA
SPRINGFIELD, MO. 65807
417-866-2602

TREASURER
JOE MAHER
9410 EASTERN
K. C. MO 64138
816-763-0386

2ND VICE-PRES.
JAMES ROBINS
800 RICEY ROAD
KENNETT, MO. 63587
314-888-5628

EDITOR
CAROL R. BOECKMANN
619 MENDELSON DRIVE
KIRKWOOD, MO. 63122
314-821-1856

VOLUME # 16

QUARTERLY NEWSLETTER
DECEMBER 1978

NUMBER 4

DEAR BEEKEEPING FRIENDS,

Kirkville was the site of the Fall Missouri State Beekeepers meeting on October 28, 1978. Northeast University provided their facilities for the occasion and served a delicious luncheon in their very attractive cafeteria. Mr. John Root and Mr. W. A. Stephen were featured speakers. A display was set up and contributed to by many of the association members. All who attended obtained much useful information to take back to their locals and for their own use.

The Spring meeting will be held March 24, Saturday, in Columbia, in the Agriculture Building, on the University of Missouri Campus. Dr. William T. Wilson of the Laramie, Wyoming Experimental Lab will be one of the speakers. The Executive Board meeting will be the preceding Friday evening, March 23. The location of this meeting will be established later. All interested beekeepers are encouraged to attend both meetings. They are not limited to the Exec Board.

CONGRATULATIONS TO MR. CARL KARLTHOFF, LONG TIME MEMBER OF OUR ASSOCIATION WHO WAS SELECTED AS 1978 BEEKEEPER OF THE YEAR!!!!

According to our records, if the address label on your newsletter is marked with a red check no dues were paid for 1978. The 1979 dues are due and payable now. Unless dues are paid or you contact the Secretary and advise him otherwise, no Spring letter will be sent to you. Dues to Secretary Crain (address on letterhead) are \$3.00 or to the Secretary of your local \$2.00 if affiliated with the State Association.

For the first time in many years the American Honey Producers Association Convention will be held in the State of Missouri. The convention will be held February 5-9, 1979 at the Airport Hilton Inn, 10330 Natural Bridge Road, St. Louis, Mo. 63134. The A.H.P.A. has put together a very fine program. Some of the scheduled speakers are Dr. E. C. Martin, USDA, with a report on Bee Research; Mr. Phil Gray, EPA's Responsibility for Beekeeping; Dr. W. T. Wilson, USDA, Current Research at Laramie Bee Lab; Dr. Eric Erickson, USDA, New Soybean Pollination Research Program, and many other qualified and interesting speakers. The morning and afternoon meetings on Tuesday, February 6, have been set aside for the Missouri State Beekeepers Association. I would urge all interested beekeepers to attend one or more days of the convention since it will be some years before the American Honey Producers Association will hold their convention in the Midwest area again.

A WORD FROM OUR PRESIDENT-Its been a busy time since our Fall meeting which I enjoyed very much. I think Mr. Hardin had a very good program planned and the facilities and lunch were first class.

November 16, Dr. Jones, Truman Hardin, Dave Mason and I assisted in a program at Crane, Missouri planned by Bob McGill, Youth Specialist with the Extension Service. There were several in attendance and we hope the program was a help to everyone.

November 21, Truman Hardin and I attended the Governor's Conference on Agriculture and also attended the Governor's luncheon during which Governor Teasdale signed our proclamation declaring November Apiculture month. The Conference was well attended with over 400 at the luncheon. Our proclamation was read by Jack Runyan, Director of Agriculture, before the signing so the facts of beekeeping and the services they render to farmers in Missouri were well publicized to the right people.

The Penwalt Company is still pressing for a special "local needs" registration of Pencap(M) for the control of European Corn borer in field corn. This registration is to supplement their EPA Federal label which already allows its use on alfalfa, sweet corn, cotton, and several other farm crops. The use of Pencap (M) on field corn would cause widespread spraying of Pencap (M) in the state of Missouri increasing the hazard to bees foraging for corn pollen, especially in those areas where other sources of pollen are scarce at this time of year. Their recommendations for its use are to start spray applications at the time silking starts and continue as needed. This most certainly would mean aerial spraying and we all know what this means to a beeyard anywhere close to this type of spraying.

Mr. John Hagan, Supervisor of the Bureau of Pesticide Control, has called a meeting December 12 to hear the pros and cons to Pencap (M). Those attending will be Mr. Hagan, Dr. Flermoy Jones, Jim Robins, representing Missouri Beekeepers, and a representative from the Penwalt Company. I'm glad we have a man as well qualified as Jim Robins representing Missouri Beekeepers at this meeting.

Those working with the Honey Queen program are Marilyn Smith, Chair Person, Louis Smith, Delbert Scott, and John Hartman. I'm sure these people would appreciate any information or suggestions you would have to offer.

Charlie Wills
President

* * * * *

To date we have only received notice of three associations sending notices or petitions to Mr. Hagan urging a ban on Pencap (M). The locals we have heard from so far are Midwestern Beekeepers, Eastern Missouri Beekeepers, and Boone Regional Beekeepers. We hope this is not the only response to our plea as this affects beekeepers all across the state. We hope, instead, that the various other locals have merely failed to tell us. Everyone's action on this matter is important to the success of our stand. We must stop this hazard to our bees.

The following is a copy of the letter written by Charles Wills, President of Missouri State Beekeepers, to Mr. John Hagan, of the Missouri Department of Agriculture, Plant Industries Division, Bureau of Pesticides concerning the Association's stand against Pencap (M) as directed at the Fall meeting.

Dear Mr. Hagan:

At the Fall meeting Oct. 28, 1978 of the Missouri Beekeepers Association a report was given in the business session stating, the Penn Walt Co. had applied for a special local needs request permitting the use of microencapsulated pesticides, specifically Pencap (M), in the state of Missouri. After a lengthy discussion and other reports regarding its use in other states and the serious threat to the beekeeping industry, there was a move and second, followed by an unanimous vote that the Missouri Beekeepers Association take a stand against the use of microencapsulated pesticides, specifically, Pencap (M) in the state of Missouri.

I was directed by the Association to inform your office of our stand. I'm also sending articles explaining the hazards of Pencap (M) relating to beekeeping and also articles about action taken by other states against the use of Pencap (M).

We hope our statement and stand will help your department in making future decisions relating to the Beekeeping industry in Missouri.

Respectfully,
Charles Wills
President

* * * * *

The following news was sent in from the Two Rivers Association.

We held our annual election of officers on December 5, 1978 and our new ones are:

President: Vernon D. Reynolds, Rt. 1, High Hill, Mo. 63350
V. President: Delbert Scott, Rt. 2, Box 144, O'Fallon, Mo. 63366
Sec.-Tres. Goldie Reynolds, Rt. 1, High Hill, Mo. 63350
Refreshment Chairman: Marilyn Smith, 4301 Walnut Tree,
St. Charles, Mo. 63301

We have a new meeting location now. It is the St. Peters Civic Center, St. Peters, Mo.

On December 5, 1978, Mr. Wills called me and asked if I would gather information in regards to the Honey Queen Contest, rules or whatever. I'm supposed to make a report at the March meeting. He said several of you had checked into it in the past and might be able to help. I would appreciate any and all information I can get. Maybe you could confirm this with Mr. Wills and ask in the newsletter for information to be sent to me. Is this possible? I'm not sure where to start at this time, but guess it will be a challenge for me.

Marilyn Smith
4301 Walnut Tree
St. Charles, Mo. 63301

On November 19-21, the 1978 Governor's Conference of Agriculture was held at the Ramada Inn, in Jefferson City. Sunday evening featured a Missouri Products Buffet. At the luncheon on Tuesday, Governor Teasdale signed a proclamation declaring November Apiculture Month. Following this conference our President Charles Wills received the following letter for our contribution to the Products Buffet:

Dear Charles,

On behalf of all who attended the Missouri Products Buffet, I would like to thank you for your generous contribution to the Governor's Conference on Agriculture.

We used honey in Honey Nut Cookies and in a Honey-Orange Sauce for the Fruit Compote. Both disappeared very quickly.

I've been promoting honey on radio and television and in newspaper articles this past week throughout the state and will continue that promotion through December. It's perfect for the Holiday baking season!

Again, thank you, Charles, for all that divine honey. Your cooperation is sincerely appreciated.

Sincerely,
Barbara Hoelscher
Consumer Consultant

EDITOR'S NOTE: Miss Hoelscher organized honey cookery demonstrations in the Home Ec Building for us during the recent Fair at Sedalia.

* * * * *

The following letter was received by the editor from Mr. Albert D. Bradley. Since the Spring planting season will be coming soon, you will perhaps find its contents useful and informative.

Dear Mr. Nichols,

I have signed up for a wildlife and honeybee bundle with the forestry division of the Missouri Department of Conservation. They have Black Locust, Autumn Olive, Schrub Lespedeza, Aromatic Sumac, Nanking Cherry, and Vitex for 1979 planting.

You might write to Jerry Presley, Forestry Division, Department of Conservation, 2901 North Ten Mile Drive, Jefferson City, Mo. OR P. O. Box 180. He can put you in touch with your field service agent.

You might put this in the newsletter.

Sincerely,
Albert D. Bradley

* * * * *

Why do people who are allergic to BEES always break out in the HIVES?
Do people allergic to HORSES break out in STALLS?

MINUTES OF THE BUSINESS MEETING OCT. 28, 1978 KIRKSVILLE, MO.

STATE FAIR-Roger Nichols, Fair Chairman, thanked his workers calling special attention to the large delegation from the Two Rivers Assn. He was pleased that fourteen exhibitors had participated this year and hoped for many more next year. Roger called attention to the care and co-operation Joe Francka, Jim Dotson and the Agriculture people gave in seeing that the exhibits were protected during and after the Fair. National Honey Queen, Gloriann Glawe and the Kansas Honey Queen, Beth Haworth were both praised and thanked for their work. Both Queens have written to offer their assistance in helping Missouri enter the Honey Queen program. Roger reported a net profit of \$1093.11 plus a supply of cookbooks and labels for next year.

TREASURER'S REPORT-by Joe Maher, Treasurer, covered details giving a net balance of \$1323.54 as of Oct. 27, 1978. This was approved as read.

Secretary Crain read the proposed By-law change that was published in the June newsletter as per request of James Martin and Bill Garesche. After discussion the proposed By-law change was rejected.

Joe Maher moved that Mo. State Beekeepers participate in the Mo. State Fair next year as we did this year. 2nd by Delbert Scott. Motion passed. Roger Nichols was appointed 1979 Fair Chairman.

Joe Maher moved that Jay Tohtz be appointed Liason between the Mo. State Beekeepers Assn. and the State Legislature. 2nd by Roger Nichols. Motion passed unanimously.

Charles Wills moved that Carl Kalthoff be selected Beekeeper of the Year for 1979. 2nd by Truman Hardin. After discussion the motion was withdrawn and restated with the date changed to this year, 1978. A plaque is to be presented at the 1979 Spring meeting. Motion passed unanimously.

Joe Maher moved that in the future the "Beekeeper of the Year" be selected in the Spring meeting and the plaque be presented at the Fall meeting. 2nd by Charles Wills. Motion passed.

Jay Tohtz gave his last Presidents message recounting the triumphs and failures during the three years he served as president. This year Jay donated the honey and bear heads that accompanied the letters pleading with the legislators for passage of the Bee Law, and thanked his officers and especially his wife Jean for their help in making the successes possible. At the conclusion of Jay's talk, he was given a standing ovation.

The Nominating Committee presented a slate of 1979 officers as follows:
Charles Wills-President
Truman Hardin-1st Vice President
Jim Robins-2nd Vice President
Chester Crain-Secretary
Joe Maher-Treasurer
Tom Howman-Board member at Large
Henry Boeckman-To fill unexpired 2yr term of Jim Robins
George Vanarsdall-3yr Term
(Don Taylor has 1 year remaining on his term of office.)

With no further nominations coming from the floor, Joe Maher moved that nominations cease and the recommended list be elected by acclamation.

2nd by Delbert Scott. Motion passed.

New President, Charles Wills, assumed charge and appointed Jay Tohtz as Liason Officer. Carol Boeckman was appointed Editor with the assurance that an extended effort would be made by the local associations to provide items for the newsletter.

Columbia, Missouri will be the location of the 1979 Spring meeting and consideration is being given to making it a two (2) day meeting.

Since the Pennwalt Company has resumed efforts to get Pencap-M registered for use in Missouri, Jean Yemm moved that the President write a letter to Mr. John Hagan, Pesticide Control of the Missouri Dept. of Agriculture voicing the Association's opposition to Pencap-M's registration. 2nd by Henry Boeckmann. Motion passed.

Due to the extreme hazard to beekeeping by this new packaging of the highly toxic methyl parathion, Jim Stewart moved that each local association draw up a petition informing the State Agriculture Dept. of the Association's opposition to Pencap-M's registration for use in Missouri sending the original to the President and copies to Dr. Flermoy Jones and Secretary Crain. 2nd by Glenn Yemm. Motion carried.

Jim Stewart moved that the president send a copy of his letter to each local. 2nd by Kay Siron. Motion carried.

Roger Nichols moved that the president appoint a committee to draw up guidelines to sponser a Missouri Honey Queen Program but not plan to enter her in national competition due to financial limitations. Joe Maher moved to amend Roger's motion to publicize this and have contestants so a Honey Queen could be voted upon at the next Spring meeting. 2nd tom Hawman. During discussion George Vanarsdall strongly recommended that if we go into the program we back the Queen 100% sending her to the National if she wanted to go. Motion carried.

Meeting adjourned with the giving of door prizes 4:45 p.m.

Chester Crain, Secretary.

* * * * *

Tom Ross arranged to have Bee-Jay Farm send a complete super of Ross Rounds in Visi-check frames for the Kirksville meeting. Instead of giving this as a door prize the Executive Board decided to keep the super as an association prop, making it available for display at Fairs and beekeeping classes. This round comb section equipment is an improved version of the Cobana comb honey system described in Dr. Richard Taylor's "How-To-Raise Beautiful Comb."

Local associations wishing to book this super should get in touch with Secretary Crain. This package weighs 14 pounds and can be shipped UPS in Missouri for approximately \$2.00.

* * * * *

CAUTION: BEE CROSSING

Walla Walla, Wash.-You've seen highway deer crossings, even cow crossings. But a bee crossing? Nine alfalfa farmers have asked Walla Walla County commissioners to post bee crossing signs to slow traffic that proves fatal to the

pollinating bees which are choosy about the fields they frequent and follow certain flight patterns, the farmers said.

Charles Saranto, spokesman for the group, asked the county to place 20-mph speed limit signs on nearby roads to help cut down the number of bees that wind up mashed on vehicle radiators and windshields.

Farmers say they are stung economically by the loss of bees that pollinate their alfalfa. Each bee death means a \$1 loss, they said.

Dennis Skeate, county engineer, said the state has no official bee signs, but he would post speed limits if farmers supply accompanying explanatory posters.

* * * * *

NOTES FROM MO. STATE FALL PROGRAM

JOHN A. ROOT-Taking his cue from our European cousins, Mr. Root's presentation of "A Closer Look at the Honey Bee" shifted our thinking from colonies of honey producers to the parts and functions of individual bees.

Using slides, many of which were taken with the aid of an electron microscope, we were shown details, from antenna to stinger, that are seldom seen, even with the aid of an optical microscope. Along with the slides, Mr. Root treated us to side-light stories such as Professor Gould's lengthy search for an instrument sensitive enough to detect the magnetism in bees. A magnetic force that might explain the orientation of combs built in unrestricted environments, or the why of errors detected in the information conveyed by the honeybee's dance. A delicate instrument which, when found after a long search, was a piece of equipment in the Princeton laboratory of a Geologist not twenty feet away from Professor Gould's own lab. Don't be surprised if you catch some of us waving a horseshoe magnet over a dead bee. It will be neither witchcraft nor pheromones causing us to do it-just a few words dropped by Mr. Root.

In the Question and Answer period following Mr. Root's talk we were given A Closer Look at the wheel, A. I. Root, the Scientific American and the Wright Brothers Contraption. If you weren't there-you missed some good stories that bear repeating and perhaps Mr. John Root will send you a reprint if you ask.
(Editor's Note: Send request attn: John Root, GLEANINGS IN BEE CULTURE, Medina, Ohio 44256)

* * * * *

A. STEPHEN-Professor Stephen's "What the Better Beekeeper Should Know and Do" put the fellow whose tractor found his colony while mowing, in the "Bee Haver" class. The rest of us, who keep learning and doing by continuously upgrading our practices with the study of colonies as well as books are well on our way to becoming "Better Beekeepers". The Professor says, "When we stop getting better-we cease being good." If we follow the suggestions offered by Mr. Stephen, we will be well on the "Better" path.

* * * * *

SPREAD GOOD CHEER AT CHRISTMAS! GIVE GIFTS OF HONEY!

FINANCIAL REPORT 3/17/78 to 10/27/78 - Balance on hand 3/17 \$1017.81

DEPOSITS	MEMBERSHIP FAIR	ADVANCE	REFUND
3/25	180.00		
4/11	213.00		
4/14	119.00		
8/8	49.50	100.00	
8/20		598.00	
8/21		2081.65	
9/5	9.50	1690.63	
10/14	55.00	20.81	
10/14			
	<u>661.00</u>	<u>4391.09</u>	<u>100.00</u>
		Linden Press	4.57
			<u>4.57</u>
		Total Assets	<u>5156.66</u>
			<u>\$6174.47</u>

EXPENDITURES:

# 12	3/18	Gibson - Taylor, speakers (Motels) \$	44.25
13	3/18	Glenn Gibson, Speaker, travel	128.00
14	3/18	Dr. Taylor, speaker, travel	200.00
15	3/18	John Hartman, Flowers for Mr. Kibbey	15.62
16	3/18	Dr. Jones, Meeting-coffee	7.00
17	3/25	Roger Nichols, return letters, staples	10.00
18	3/25	J. Maher, telephone	1.61
19	4/14	Truman Hardin-postage-coffee-phone	19.52
20	4/14	Chas. Wills, speaker meals	4.30
21	4/15	American Honey Producers, donation	200.00
22	4/14	T. Hawman dues refund	2.00
23	4/14	Ed Schmitt dues refund	2.00
24	6/20	Postmaster, Mailing Fee advance	50.00
25	6/20	Secretary Crain, Prints, mail, supplies	8.39
26	6/20	A. McHenry dues refund	2.00
27	6/29	Sue Nichols, typing newsletter	30.00
28	6/28	Roger Nichols, Fair parking, permits	79.50
29	7/7	Mo. Fair concession stand	200.00
30	7/7	Walter Kelly Co. Honey Refractometer	173.45
31	7/7	Los Angeles Honey Cookbook	346.00
32	7/22	Linden Books-Dr. Taylor's book	123.50
33	8/8	Justrite Stamp-Label stamp	13.54
34	8/8	Secretary Crain Expenses	6.50
35	8/9	Lettercraft, Honey Labels	98.93
36	8/9	1st National Bank-change for booth	50.00
37	8/20	Mo. State Sales Tax (Fair)	85.06
38	8/24	Mo. State Sales Tax (Fair)	81.97
39	8/20	Sue Nichols, Living expenses at Fair	100.00
40	8/29	Thelma Saxby, Queen expense	109.94
41	8/29	Truman Hardin, Telephone expense	12.20
42	8/29	Joe Maher, Advance Return	100.00
43	8/29	Truman Hardin, Kelly Cookbooks	145.32
44	8/29	Paul Clegg, 1st Lessons in Beekeeping	24.99
45	8/30	Chester Crain, comb honey for Fair	73.00
46	8/30	Chester Crain, Secretary Expenses	20.11
47	8/30	George Vanarsdall, Money for Fair	1999.34
48	9/15	Sue Nichols, Fair Expense	154.94
49	9/15	Joe Maher, Telephone Expense	16.38
50	9/15	Chas. Wills, decals	207.00
51	10/2	Sue Nichols, typing newsletter	15.00
52	10/10	Truman Hardin, Telephone expense	39.43
		Bank Charge	1.14

Total Expense \$4851.93 4851.93
 Net Balance on Hand 10/27/78 \$1322.54

BANK RECONCILIATION:

Balance prior report
Deposits
Checks issued
Checks outstanding
Balance on Hand

LEDGER
\$1071.81
5156.66
4851.93

\$1322.54

BANK
\$1521.97
80.38 (Not record
at bank)

279.81
\$1322.54

* * * * *

"The Lord himself, therefore,
will give you a sign.
It is this: the maiden is with child
and will soon give birth to a son
whom she will call Immanuel.
On curds and honey will he feed
until he knows how to refuse evil
and choose good." (Isaiah 7:14,15)

* * * * *

Jim Dotson, Superintendent of the Apiculture Department at the State Fair thanked the Association for this year's participation. Since the fourteen exhibitors all had top grade honey, he and Judge Joe Maher had to put in a long twelve hours with the polariscope and refractometer to separate ties. Jim told of the revisions made in the scoring system and said letters suggesting changes for next year's bigger and better show would be welcome.

* * * * *

CHRISTMAS calls for family times and good food. This recipe comes to us with best wishes from the Kansas State Beekeepers.

CARAMEL CANDY

1/4 lb. Honey in COMB (4 oz.)
1 3/4 cup white sugar
1 1/3 cup brown sugar
1/2 cup light corn syrup
1/3 cup butter NO SUBSTITUTE!
1 cup half and half
1 cup whipping cream not whipped
1 tsp. vanilla
1/2 cup nuts

Combine first six ingredients. Boil in deep pan to 230° (softball). Stir constantly. Add whip cream. Bring to 240° (hard ball) summer time 252°. Add vanilla and nuts. Pour into a lightly buttered pan. Let stand 24 hours. Cut and wrap in wax paper.

FROSTED HONEY EGG NOG

3 Tbls. honey
dash of salt
6 eggs
1 1/2 cups milk
3/4 tsp. vanilla
Ice cream

Add honey and salt to eggs and beat well with rotary beater. Stir in milk and vanilla. Sprinkle with nutmeg. Float a spoonful of ice cream of top of each serving. Makes six servings.

HONEY COCOA

4 tbs. 5 tbs. 6
4 tsp. cocoa, 4-5 tsp. honey, few grains of salt. 1/3 cup water, 1-1 1/3 cups milk. Heat to steaming. Float a marshmallow in each of two cups.
per. 3 tbs. per. cream

ADDRESS CORRECTION REQUESTED

NON-PROFIT ORGANIZATION
U. S. POSTAGE PAID
K. C. MO. PERMIT # 947

MISSOURI STATE DEERPEPERS' ASSOCIATION
8754 E. 83rd ST.
MAYTOWN, MO. 64138

SEASON'S GREETINGS!

